

AU-60LM

POWER RANGE

340W~380W

CELL FEATURE

166*166, 23.11%



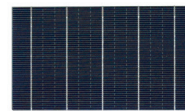
JUNCTION BOX

High waterproof rating
Protection Degree: IP67
Safety Class: Class II
Rated Voltage: 1500V



FRAME

Strong mechanical load
resistance up to 5400 Pa
Anodic oxidation layer resistant
to chemical corrosion
Available in silver and black

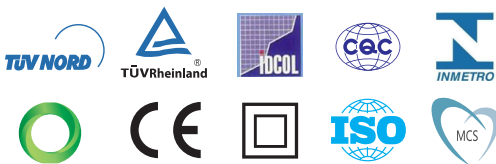


5BB



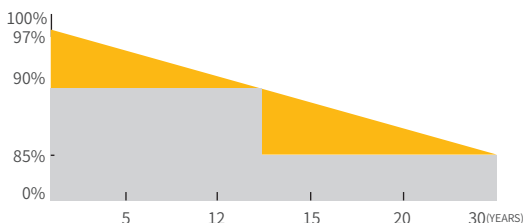
9BB

QUALIFICATIONS AND CERTIFICATES



• IEC61215 / • IEC61730

WARRANTY



12
YEARS

Guarantee on product material and workmanship

30
YEARS

Linear Power output warranty



MBB CELLS

More uniform current collection reduces the current loss of the cell inside panels



Anti-reflective glass

Increases the light absorption, and reduces the power loss caused by the self-cleaning in rain.



Excellent performance in low irradiance

Enable solar panels to generate electricity in the morning, cloudy and rainy days.



PID Resistant

Perfect resistance against PID (Potential Induced Degradation) to secure your investment.

AUSTA ENERGY
www.austagroup.com

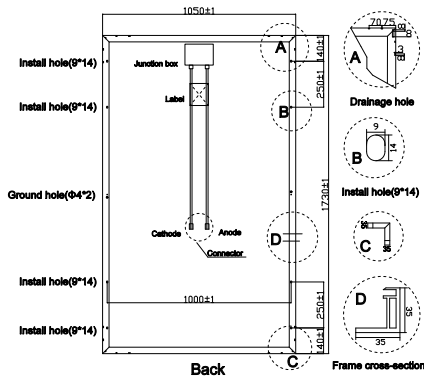
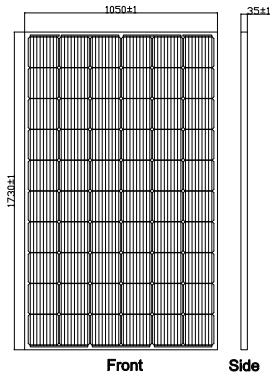
AUSTA ENERGY, established in 2009, is a high-tech enterprise specializing in R&D, production and sales of photovoltaic products, such as solar modules, silicon rods, cells, etc., as well as the investment and operation of solar power plant. The capacity of solar modules can reach 1 GW a year.

Located in Ningbo, AUSTA has a sound market network over Europe, America, Asia, Oceania and Africa. The subordinate branches and representative offices are located in more than 10 countries including Germany, Denmark, Bangladesh, Burma, India, etc.

AUSTA contributes to a cleaner and greener environment by helping people use alternative energy, which hopefully can lead to a brighter and more prosperous future for human being.

PV DRAWINGS

Unit:mm



ELECTRICAL DATA (STC)

Model Type	AU340-30-M	AU350-30-M	AU360-30-M	AU370-30-M	AU380-30-M
Peak Power(Pmax)	340.00	350.00	360.00	370.00	380.00
Maximum Power Voltage(Vmp)	33.24	33.44	33.64	33.84	34.04
Maximum Power Current(Imp)	10.23	10.47	10.71	10.94	11.17
Open Circuit Voltage(Voc)	40.32	40.56	40.81	41.05	41.29
Short Circuit Current(Isc)	10.80	11.06	11.31	11.55	11.80
Cells Efficiency(%)	20.67	21.28	21.89	22.50	23.11
Module Efficiency(%)	18.71	19.26	19.81	20.36	20.91

* STC: irradiance 1000 W/m², AM 1.5, and cell temperature of 25° C

ELECTRICAL DATA (NOCT)

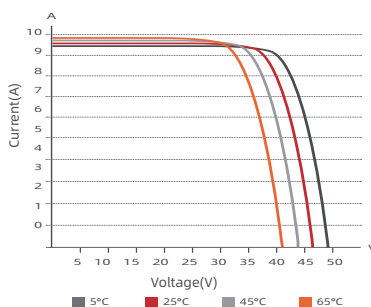
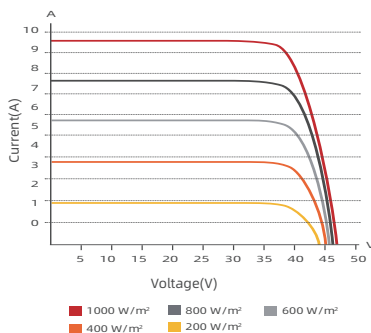
Model Type	AU340-30-M	AU350-30-M	AU360-30-M	AU370-30-M	AU380-30-M
Peak Power(Pmax)	252.00	260.00	267.00	275.00	282.00
Maximum Power Voltage(Vmp)	31.08	31.27	31.45	31.64	31.83
Maximum Power Current(Imp)	8.11	8.32	8.49	8.70	8.86
Open Circuit Voltage(Voc)	38.04	38.27	38.49	38.73	38.96
Short Circuit Current(Isc)	8.60	8.83	9.01	9.23	9.40

* NOCT: irradiance 800 W/m², AM 1.5, ambient temperature 20° C, wind speed 1 m/s

TEMPERATURE & MAXIMUM RATING

Maximum System Voltage(V)	1500
Maximum Series Fuse Rating(A)	20
Power Tolerance	0 ~ +3 %
Pmax Temperature Coefficients(W/°C)	-0.370 %
Voc Temperature Coefficients(V/°C)	-0.286 %
Isc Temperature Coefficients(A/°C)	+0.057 %
NOCT Nominal Operating Cell Temperature(°C)	45±2
Operating and Storage Temperature(°C)	-40 ~ +85

IV CURVE



MECHANICAL CHARACTERISRTICS

Cell Type	166x166 Mono
No. of Cells	60(6x10)
Dimensions	1730x1050x35
Weight	19.50kg
Front Glass	3.2mm high transmission, low iron, tempered glass
Frame	Anodized Aluminium Alloy
Junction box	IP65/IP67
Output cables	4mm ² cable 90cm+mc4
MaxWind Load/Snow Load	2400Pa/5400Pa

PACKING WAY

20FT container	6 Packages/ 180pcs
40HQ containe	26 Packages/780PCS

Austa



ZHEJIANG AUSTA GREEN ENERGY TECHNOLOGY CO., LTD

ADD: NO.128 Haichuan Rd, Jiangbei Dist., Ningbo, China

Tel: 86-574-87915068

Fax: 86-574-87906633

E-mail: sales@osdasol.com